



# PUBLIC AUCTION

**10:00 a.m. • Saturday, October 18, 2008**

**Tractors • Backhoes • Equipment • Bulldozer • Trailers  
Pickups • Augers • Feeders • Pipe • Miscellaneous**

**SALE LOCATION:** From the Intersection of Hwy. 34 & Hwy. 33 at Hammon, Oklahoma go 4 1/2 miles West on Hwy. 33 and approximately 2 miles North on County Road N1190 & West on County Road E0920 Watch for Signs!!

**-- THERE ARE NOT MANY SMALL MISCELLANEOUS ITEMS - SO BE ON TIME! --**



### TRACTORS, BACKHOE & EQUIP

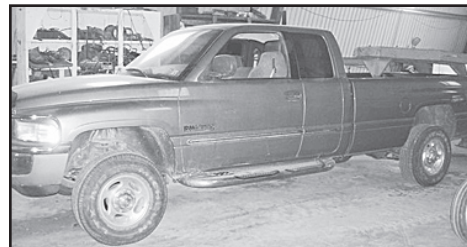
- 1-Case 580K Extend-a-Hoe, 4 WD, Cab, Clam Shell Bucket, 24" Bucket, approx. 3400 hrs.
- 1-John Deere 8630, 4x4, Triple Hyd., 902 hours on new 50 Series Engine, 300 hp, Rebuilt Hyd. Pump, 20.8-34 Rubber
- 1-John Deere 4440, Quad Range, Triple Hyd., Duals, 3 pt., PTO, 18.4-38 Rubber, 3367 hrs.
- 1-Case 1070 Tractor, Dual Hyd., 3 pt., PTO, Duals, 18.4-38 Rubber, Replaced Motor, Clutch & Pressure Plate in 2007
- 1-Allis Chalmers 190, Dual Hyd., 3 pt., PTO, 18.4-38 Rubber, Cab
- 1-2003 Kubota Tractor, Model B7500, 4 WD, Power Steering, 54" Belly Mower, LA302 Loader, 224 hrs., Bought New
- 1-631 Ford Tractor, New Paint, Water Pump, Alternator, Battery, Tires, Brakes
- 1-John Deere B Tractor, Needs Restoration
- 2- Backhoe Buckets, 12" & 16"
- 1-Ford Bucket, 18"
- 1-John Deere 740 Quick Attach Loader w/ John Deere Quick Attach Bucket
- 1-John Deere Quick Attach Hay Spike
- 1-12' Pull Brush Beater
- 1-5 1/2' Sidewinder Brush Beater, 3 pt.



- 1-Ford 951, 5' Brush Beater, 3 pt.
- 1-Amco Tandem Disc, 35' Double Fold
- 1-10' Land Leveler
- 1-Roller Mill w/10 hp motor
- 1-Kent 18' Springtooth, Manual Double Fold
- 1-Wilbeck 14' Offset Disc
- 1-Graham Hoeme 32' Double Fold Chisel w/Buster Bars
- 1-John Deere 5 Bottom Semi-Mount Moldboard
- 1-John Deere 4 Bottom Moldboard
- 1-Dearborn 2 Bottom Moldboard
- 1-5' Offset Disk, 3 pt.
- 1-John Deere 8300 Drill, 20-8's, Press Wheels
- 1-Crustbuster 32' Hoe Drill, Double Fold, 10" 1-8' Blade, 3 pt.
- 1-Graves Bale Spike, Bent Tongue, 3 pt.
- 1-New Holland Hay Rake, 10"
- 1-New Holland 166 Hay Inverter
- 1-Case International Hydro-Swing Swather, 14'
- 1-909 Swather, 14', Self-propelled (For Parts), Good Engine
- 1-John Deere 530 Round Baler, Near New Belts
- 1-New Holland 358 Grinder/Mixer, works good
- 1-Small Square Bale Loader
- 1-Danuser Posthole Digger, 3 pt. w/9" auger
- 2-Posthole Digger Augers, 12" & 16"
- 2-Forkmate Scaffolding for Forklift, 1 w/ Pivot Top

### BULLDOZER, TRAILERS & PICKUPS

- 1-2001 Dodge Ram 2500 Pickup, Laramie SLT, 3/4 Ton, Diesel, 6 spd, 4x4, 78,600 miles, 1 owner
- 1-1988 Ford F-250, Diesel, 4x4, 3/4 Ton, 4 spd, Flat Bed, Hyd. Bale Spike, Rear-end Rebuilt, New Transfer Case
- 1-1997 Sooner 6'6"x24' Aluminum Stock Trailer, GN,
- 1-32' PJ Flatbed Trailer, GN, Tandem Duals, Ramps
- 1-Delco 24' Lowboy Carhauler, 7000# axles, GN
- 1-WW 6'x20 Stock Trailer, GN
- 1-Flatbed Trailer 8'x28', 3 Axle, GN, Dovetail & Ramps
- 1-Two Horse Trailer, Bumper Pull
- 1-16' Utility Trailer, Steel Floor
- 1-16' Shop Built Electric Dump Grain Trailer, 3 axle, GN,
- 1-Caterpillar D4D Bulldozer, 8' Blade, Overhauled Motor, Needs Brakes
- 1-Dozer Trailer, 3 axle, Needs Floor



- 1-Shop Built GN Tool Trailer
- 1-Reading Tool Bed for 1 Ton
- 1-SA Trailer w/110 Gallon L-Shape Fuel Tank, 12 volt pump
- 1-Polaris 250, 2x4, 4 Wheeler

### AUGERS, FEEDERS, PIPE & MISC.

- 1-6"x50' Mayrath Grain Auger, PTO
- 1-6"x25' Mayrath Grain Auger
- 1-6"x30' Auger, PTO
- 2-4"x15 Electric Grain Augers
- Approx. 24 Joints 2" Pipe
- Approx. 17 Joints 1 3/4" Heavy Wall Pipe
- Approx. 75 Joints 1 1/4" Square Tubing
- 2-8' Portable Feeders
- 2-16' Portable Feeders
- 1-8' Creep Feeder w/Shaker
- 8-Clausing 10' Metal Feeders, Stackable
- 1-Moorman Mineral Feeder
- 3-Twin Creeper Calf Creep Feeders
- 2-Single Side Calf Creep Feeders
- 1-T & S 1500" Cake Feeder
- Large Lot 8'-12' & 20' Cattle Panels
- 1-Lot Welded Wire Cattle Panels
- 3-Head Gates 2-Saddles
- Approx. 20 - 10' Steel Concrete Forms
- 13-17' Wood Rafters 3-16' Cattle Guards
- 12-30' Steel Rafters w/7 1/2' Legs
- 5-12"x24' Bridge Planks
- Approx. 10 Bridge Timbers, 6"x12"x12'
- Approx. 7000' 5/8" Cable on Spool
- Approx. 30 Bale Plains Grass Hay, Big Round Bales
- 1-110 Gallon Pickup Propane Tank
- 1-100' Tripod Antenna Tower, 10' Sections
- 3-Pushmowers, need work



**PERSONAL PROPERTY TERMS: Cash, Visa, MasterCard or Personal Check.**

**All Accounts must be settled on sale day. Permits must be shown or sales tax will be charged.**

**OWNERS: DONALD & TWINKLE WILSON**



Mike Grant  
Auctioneer/Sales Associate  
Texas License #13353  
Mobile: 821-1186

Cindy Grant  
Cashier/Real Estate Broker  
Elk City, OK  
Mobile: 821-1738

FIND US ON THE WEB AT  
[www.grantsauction.com](http://www.grantsauction.com)

Johnny Grant  
Sales Associate  
Cheyenne, OK  
(580) 497-2281

Jim Bales  
Auctioneer & Sales Associate  
TX Lic. #AA11060  
(580) 928-2982



ANY ANNOUNCEMENTS MADE DAY OF SALE SUPERSEDE ALL PREVIOUS WRITTEN OR ORAL STATEMENTS.