

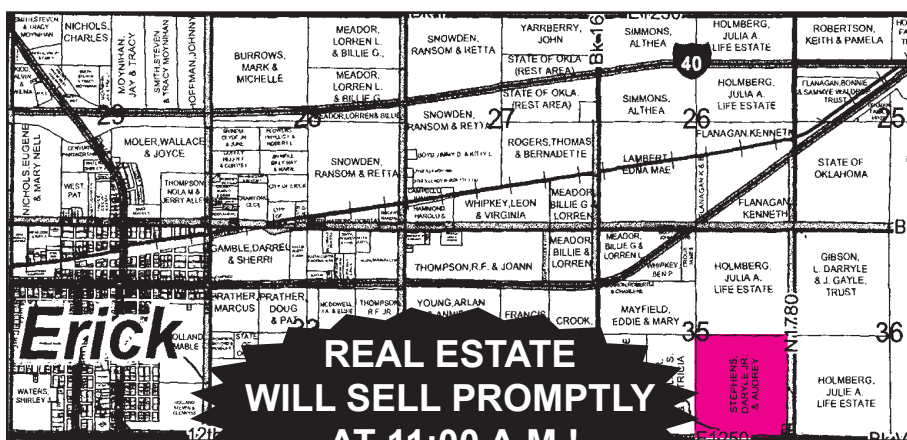
# PUBLIC AUCTION



**10:00 a.m.  
Saturday,  
June 20, 2009**

**158 Acres Grass & Farm Land • 3 Bedroom, 1<sup>3</sup>/<sub>4</sub> Bath Brick Home on 2.8 Acres East of Erick, OK • Tractors • Farm Equip. & Trailers • Recreational Vehicles & Pickups • Shop & Garden • Tools • Hay • Cattle Panels**

**SALE & PROPERTY LOCATION:** Exit 7 off of I-40 at Erick, OK, go South to stoplight at the Intersection of Roger Miller Blvd. & Sheb Wooley St., go East on Roger Miller Blvd. 3 1/2 miles to County Road N1780, go South 1 1/4 mile to property or from Exit 11 off of I-40 go West 1 mile on Roger Miller Memorial Highway to County Road N1780, go South 1 1/4 mile to sale & property location.



**TRACT #1 LEGAL DESCRIPTION:** The Southeast Quarter of Section 35, Township 9 North, Range 25 West, I.M., Beckham County Oklahoma, less a 2.8 acre tract in the Southeast Corner. Containing 158 acres (mol).

### TRACT #1 PROPERTY DESCRIPTION:

This tract has approximately 44 acres irrigated alfalfa, 13 acres wheat and the balance being native pasture. There is a nice set of pipe corrals with a tub, squeeze chute and Priefert head gate. According to the FSA office there is a wheat base of 121.9 acres. There is a Case 4391 Irrigation Engine on the irrigation well that will run a 1/2 mile plus irrigation pipe and there is an additional water well to water stock. They have two irrigation water well permits which are transferable.

**TRACT #1 OWNERS: DARYLE & AUDREY STEPHENS.**

**TRACT #2 LEGAL DESCRIPTION:** A 2.8 acre tract of land in the Southeast Corner of the Southeast Quarter of Section 35, Township 9 North, Range 25 West, I.M., Beckham County, Oklahoma.

**TRACT #2 PROPERTY DESCRIPTION:** This 2.8 acre tract has a nice 3 bedroom, 1 3/4 bath brick home with approximately 2,260 sq. ft. living area. There is a nice size living room, den with wood burning stove, utility with plenty of storage and access to the cellar. The kitchen has a dining area, plenty of cabinets and counter space, dishwasher, built-in oven, Jenn-air range top. This home has a metal roof (New 26 ga. Dec. 2007), garage (New Garage Door May, 2008), CHA (New 4 Ton GEO Thermal Unit April, 2008), is total electric and is on rural water. There is a water well to water the yard and flower beds which has a new well pump in July/2006. They have updated all the plumbing and fixtures and water lines and put in a new 1000 gallon septic tank, kitchen has new counter tops, utility new flooring, new vinyl windows, 32' x 16' patio roof, reinforced house foundation, paved driveway, put metal on the gable ends and painted the eaves, remodeled the 3/4 bath with a new shower and floor repair. If you are looking for a nice home on a small acreage - Don't Miss This Sale!!!

**TRACT #2 OWNER: RUTH GILL.**

**REAL ESTATE TERMS:** 10% of purchase price to be placed in escrow day of sale. Purchaser will have 10 days to examine title. Balance of purchase price to be due and payable upon acceptance of title. All 2008 and prior taxes will be paid by seller, 2009 taxes will be prorated. Possession will be at closing. All property sold "as is where is." Auction is not contingent upon buyer securing or obtaining financing. Grant's Auction & Realty is a transaction broker.

### TRACTORS

- 1-2006 John Deere 5103 Tractor w/John Deere 512 Loader w/Quick Attach Bucket, Single Remote, 94 hrs., Serial #U002419
- 1-1981 John Deere 4240 Tractor w/John Deere 158 Loader w/forks, Power Shift, Dual Remotes, 3 pt., PTO, 18.4-38 Rubber, Serial #D22929K
- 1-1981 John Deere 4440 Tractor, Power Shift, Dual Remote, PTO, 3 pt., 7246 hrs, Serial #048679R
- 1-John Deere 4010 Tractor, Single Hydraulics, Standard, 3 pt., PTO, 18.4-34 Rubber
- 1-John Deere 4020 Tractor, 1966, PTO, 3 pt., dual hydraulics
- 1-1967 John Deere 4020 Tractor, w/158 John Deere Loader, PTO, 3 pt., 4 Remotes

### FARM EQUIP. & TRAILERS

- 1-John Deere 346 Small Square Baler
- 1-John Deere 566 Big Round Baler
- 1-Hesston 5585 Round Baler
- 1-Hesston 4600 Baler
- 1-1981 Hesston 6550 Swather, 16' header
- 1-New Holland Stackliner 1033, SN 5635
- 1-John Deere 450 Wheat Drill, DD, Press Wheels, 21-7 1/2's
- 1-14' Miller Offset Disc 1-15' Offset Disc
- 1-Krause Chisel, 10' w/Two 18" Extensions
- 1-14' Chiesel, 3 pt. 1-10' Dozer Blade
- 1-4 Row Cultivator 1-14 1/2' Tandem
- 1-4 Bottom Moldboard
- 1-John Deere 12' Springtooth, 3 pt.
- 1-MF 10' Hay Rake
- 1-EZ Haul Hay Handler, 6 Bale Trailer, 32', SN B32-058265
- 1-Trallmaster Utility Trailer, TA, 76" x 16'
- 1-WW 16' Stock Trailer, Half Top
- 1-Dodge Pickup Bed Trailer
- 1-Cotton Trailer Chassis
- 1-15' Crustbuster Batwing Mower
- 1-Rhino SE5 Shredder, 5'
- 1-717 John Deere 7' Shredder

- 1-John Deere Quick Attach Forks
- 1-Small Bale Turner
- 1-Schaben Sprayer, 300 Gallon Tank, 28' Boom
- 1-Speeco Posthole Digger, 3 pt., 9" Auger
- 1-100 Gallon Fuel Tank w/12 Volt Pump
- 1-Bar Six Cake Feeder, 1200#
- 1-Hydraulic Bale Spike
- 2-1/4 Mile Siderow Irrigation systems, 5"
- 1-40' Storage Container w/12'x40' Lean-To
- 1-Husky Electric Concrete Mixer, 110#, GHM105890
- 2-3 pt. Bale Spikes 1-Single Bale Trailer

### REC. VEHICLES & PICKUPS

- 1-1994 BT 24LX Landau Pontoon Boat, Suzuki 75 hp outboard, 24'
- 1-1968 15' Starcraft John Boat, Fiberglass, Mercury 35 hp, on Trailer
- 1-2004 Chev. Pickup, Silverado, 2500HD, 4x4, Auto., 101,200 miles, Vortec 6000 V8, LS Package, One Owner
- 1-1991 Dodge Dakota Pickup, 4x4, V8, 5.2 liter, 87,600 miles
- 1-1989 Ford Pickup, Extended Cab, 302, XLT Lariat, 216,000 Miles, One Owner
- 1-1995 Dodge Ram 1500, Laramie SLT, 1/2 Ton, 4x4, Auto., Extended Cab, Short Bed, 226,000 Miles
- 1-1969 Chev. C/10 Pickup, 3 spd., Floor Shift, Short Narrow Bed, Step Side, Needs TLC

### SHOP & GARDEN EQUIP., TOOLS & MISCELLANEOUS

- 1-JD LA130 Riding Mower, Auto., 48" Cut, 100 Series, 81 hrs
- 1-Grasshopper Riding Mower, Zero Turn, 60" cut, 18 hp
- 1-Craftsman Weed Trimmer, 3 hp, 22" cut
- 1-Craftsman Push Mower, Self-pro. 21" cut
- 2-Boxes Baler Wire 1-3 1/2" Vise
- 1-16' Aluminum Extension Ladder
- 2-Broadcast Fertilizer Spreaders
- 1-Garden Planter 1-T-Post Driver

- 1-Diamond Plate Pickup Tool Box, Inside Bed
- 1-Lot Pipe Wrenches, End Wrenches, Hammers, Screwdrivers, Crescents
- 1-Lot Hoes, Rakes, Shovels, Posthole Diggers
- 1-Lincoln 225 Amp Electric Welder
- 2-Hi-Lift Jacks
- 3-Fence Chargers 1-Picnic Table
- 1-Hughes Internet System
- 1-Lot Rods & Reels, Tackle Boxes
- 1-Pull Behind Lawn Sprayer, 3' Boom
- 1-Radio Flyer Wagon w/Wood Slat Sides
- 1-36"x80" White Storm Door, NEW
- 1-1/3 hp Bench Grinder
- 1-Chev. Pickup Bed Camper Shell, LWB
- 1-New Lifetime portable basketball system 44" acrylic backboard (still in box)

### BIG ROUND BALES HAY & CATTLE PANELS

- 11-Big Round Bale Alfalfa Hay, Premium, Horse Quality
- 16-Big Round Bale Wheat Hay
- 10-Big Round Bale Grass Hay
- 31-Big Round Bale Alfalfa Hay (this year's crop)
- 1-50 lb. Bag of Alfalfa seed
- 8-16' Wire Panels, 4" 1-4' Gate
- 9-10' Cattle Panels 4-12' Cattle Panels
- 2-16' Cattle Panels 2-16' Panel Gates
- 1-Priefert 12' Panel w/4' Walk-thru Gate
- 2-10' Wire Panel Gates
- 1-150 Rubbermaid Stock Tank
- 1-8' Stock Tank 1-8' Bunk Feeder
- 1-12' Prairie Products Feeder
- Approx. 75 Post-7 1/2' & 8', 2 7/8" Approx. 20 - 32', 2 7/8" Tubing

**MANY MORE MISCELLANEOUS ITEMS!**  
**PERSONAL PROPERTY TERMS: Cash, Visa, MasterCard or Personal Check. All Accounts must be settled on sale day. Permits must be shown or sales tax will be charged.**

**PERSONAL PROPERTY OWNERS: DARYLE & AUDREY STEPHENS, RUTH GILL & ESTATE OF MIKE GORDON**



**Grant's Auction & Realty**

580-225-0269 • "The Complete Liquidation Professionals"



Mike Grant  
Auctioneer/Sales Associate  
Texas License #13353  
Mobile: 821-1186

Cindy Grant  
Cashier/Real Estate Broker  
Elk City, OK  
Mobile: 821-1738

FIND US ON THE WEB AT  
[www.grantsauction.com](http://www.grantsauction.com)

Johnny Grant  
Sales Associate  
Cheyenne, OK  
(580) 497-2281

Monte Tucker  
Auctioneer & Sales Associate  
Sunny Point, America  
(580) 515-4477

ANY ANNOUNCEMENTS MADE DAY OF SALE SUPERSEDE ALL PREVIOUS WRITTEN OR ORAL STATEMENTS.