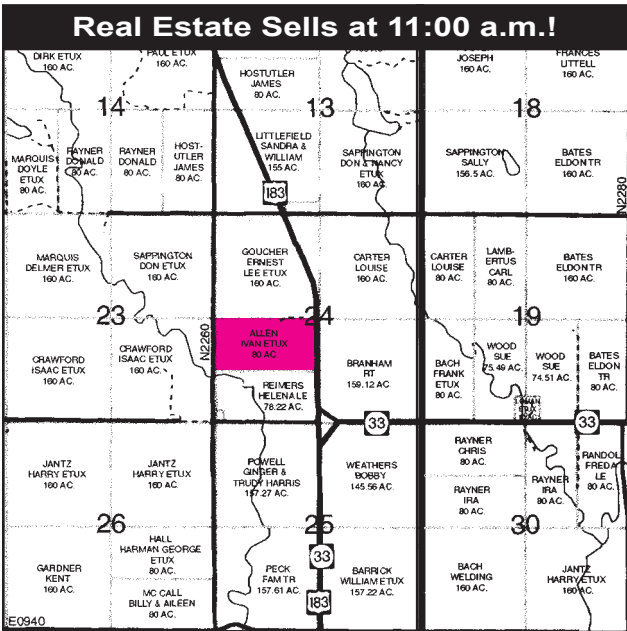




PUBLIC AUCTION

10:00 a.m. • Saturday, May 19, 2012

**80 ACRES CUSTER COUNTY GRASSLAND WITH IMPROVEMENTS • TRACTORS
DOZER • VEHICLES • TRAILERS • FARM EQUIPMENT • CATTLE PANELS
SHOP EQUIPMENT • MISCELLANEOUS • ANTIQUES & COLLECTIBLES**



SALE & PROPERTY LOCATION: From Arapaho, Oklahoma go 7 1/2 miles North on Hwy. 183, turn West into property gate, or from Hwy. 33 & Hwy. 183 Intersection at Custer City Road go 1/2 mile North on Hwy. 183.

LEGAL DESCRIPTION: The North One-half of the Southwest Quarter of Section 24, Township 14 North, Ranger 17 West I. M. Custer County, Oklahoma containing 80 acres more or less - surface only.

PROPERTY DESCRIPTION: This is an excellent 80 Acre tract of land with native and improved grasses with rolling terrain, two stock ponds a 40' x 60' metal barn with a 14' x 60' lean-to built by Winsett Barn Company, good six wire fences and Beaver Creek running on the west side of the property. This property would make a great addition to any farming/ranching operation and is in an excellent location having 1/2 mile of 183 Highway frontage – Don't Miss This Sale!!!

REAL ESTATE TERMS: 10% of purchase price to be placed in escrow day of sale. Purchaser will have 10 days to examine title. Balance of purchase price to be due and payable upon acceptance of title. All 2011 and prior taxes will be paid by seller. 2012 taxes will be prorated. Possession will be at closing. All property sold "as is where is." Auction is not contingent upon buyer securing or obtaining financing. Grant's Auction & Realty is a transaction broker.



TRACTORS, DOZER & VEHICLES

- 1-2010 Kubota M-7040 Tractor, w/LA1153 Loader, 4x4, 3 pt., PTO, Triple Remote, Shuttle Shift, Cab, Diesel, 85 hrs. SN-68139
- 1-2000 Case C-50 Tractor, w/Great Bend Front-End Loader, Diesel, 3 pt., PTO, Dual Remotes, 4 Wheel Drive, 2272 hrs. SN-CO5OAN3JJE1004
- 1-Komatsu D31A-16 Dozer, 8' Angle Blade, 1600 hrs.
- 1-A-Farmall Tractor
- 1-2002 Dodge Ram 3500 Laramie, Turbo Cummins Diesel, Duals, 11' Flat Bed, 2 wheel drive, 4 spd., 274,167 miles
- 1-1996 Dodge Ram Flat Bed 3500 Laramie SLT, Turbo Cummins Diesel, Duals, 2 wheel drive
- 1-1994 Dodge Ram 3500, Turbo Cummins Diesel, Cab 7 Chassis, 151,530 miles
- 1-1984 Dodge 350 Custom, Auto., 4x4, Flatbed
- 1-1976 Dodge Winch Truck
- 1-1975 Dodge Truck w/Box
- 1-1971 GMC 3500 Dump Truck, 4/5 yd. bed
- 1-Knapheide 8' Tool Box Bed
- 2-Titan 44x18.00-20 Turf Tires on Kubota Wheels
- 2-2.9x12.50-5 NHS Tires on Kubota Wheels
- 1-Set Grain Truck Sideboards
- 1-Shop built welding bed

TRAILERS

- 1-2001 WW GN Cattle Trailer, 6'x20', Full Top, Good Floor
- 1-GN Shop Built, Eight Bale Hay Trailer, TA
- 1-1985 Belshe T-10 GN Trailer, 25', 20' Flatbed w/5' Dovetails, Ramsey 12,000# Winch, Tandem Duals
- 1-GN Triple Axle Flatbed Trailer, 26', 21' Flatbed w/5' Dovetails



FARM EQUIPMENT

- 1-2009 Vermeer Round Baler, 605M, DCF Wide Pickup, less 1000 bales
- 1-Case 8545 Baler, Small Square, Like New
- 1-12' Land Leveler w/rippers
- 1-8' Box Blade w/rippers, 3 pt.
- 1-6' Rhino Tiller, Like New
- 1-6' Woods Finish Mower, 3 pt., PTO
- 1-Plainsman Landpride 15' Batwing Mower, RCR 3315
- 1-Danuser Post Hole Digger, 3 pt. Hydraulic, 16" Auger
- 1-Cosmo Broadcast Fertilizer Spreader, 3 pt., S-500U
- 1-65 Gal. Poly Tank Sprayer, w/16' Boom, 3 pt.
- 1-3 Bottom Moldboard
- 1-18' Schafer Tandem Disc
- 1-18' John Deere Springtooth, 3 pt.
- 1-Hesston 1014 Hydro-Swing Swather
- 1-3 Section Drag Harrow 1-6' Blade
- 1-Hay Loader, Small Squares, 5 hp Gas B/S Motor
- 1-Lincoln Welder, SA200, F-163, Diesel
- 1-Hobart Welder, Gasoline w/10,000 Watt generator
- 1-Kellogg Air Compressor, 7 1/2 hp
- 1-Power Washer, 3500 PSI, Honda 14 hp
- 2-500 gal. OH Fuel Tanks
- 4-Fuel Tanks w/Electric Pumps



CATTLE PANELS, SHOP EQUIPMENT & MISCELLANEOUS

- Approx. 36-16' Cattle Panels
- Approx. 26-12' Cattle Panels
- 3-12' Gates
- 1-Cake Feeder
- 23-Priefert 12' Round Pen Panels
- 2-Priefert 5' Walk-thru Gates
- 2-Horse Hay Rings
- 2-Hay Rings
- 5-10' Feed Troughs
- 1-Drive-Over Gate
- 1-Sterling Wood Lathe, 12" Swing, 36" Spindle Length, Model WL1236, 3/4hp, w/Lathe Tools
- 1-Bandsaw, Carolina Tool & Equip.Co.
- 1-Bench Grinder
- 1-Craftsman Planer, 12 1/2", 2 hp
- 1-Pneumatic Oil Pump
- 1-Sand Blast Pot on 2 Wheel Trailer
- 1-Cherry Picker
- 1-Bolt Bin
- 1-Transfer Pump, (Manifold Broke)
- 1-Powerline Fan Seed Dryer
- 11-4' x 32" Concrete Culverts
- 6-4' x 26" Concrete Culverts
- Large Lot Telephone Poles
- 125 (Approx.) 12'- 2x6 Lumber, Barn Kept
- 5-Rolls Baler Twine
- 16-Case Suitcase Weights
- 1-Lot Welding Stands
- 2-Metal Shop Tables
- 1-Lot Chains & Chain Booms
- 1-Lot Hydraulic Drive Units

ANTIQUES & COLLECTIBLES

- 1-3 Wheel Cushman
- 1-150#-200# Anvil
- 1-Antique Seeder
- 1-Grinding Wheel
- 2-Complete Sets Horse Harness-Harness, Collars, Reins, Headsets
- 1-Buckboard Wagon
- 1-Chariot Cart
- 1-Oak Wagon Frame
- 1-Single Horse Cart
- 1-Horse Drawn One-Way
- Large Lot Harness & Tack Equipment

MANY MORE MISCELLANEOUS ITEMS TOO NUMEROUS TO MENTION!

PERSONAL PROPERTY TERMS: Cash, Visa, MasterCard or Personal Check.

All Accounts must be settled on sale day. Permits must be shown or sales tax will be charged.

OWNER: IVAN D. ALLEN ESTATE

Grant's Auction & Realty

580-225-0269 • "The Complete Liquidation Professionals"



Mike Grant
Auctioneer/Sales Associate
Texas License #13353
Mobile: 821-1186

Cindy Grant
Cashier/Real Estate Broker
Elk City, OK
Mobile: 821-1738

FIND US ON THE WEB AT
www.grantsauction.com

Johnny Grant 1926-2010

Jeremy Justus
Auctioneer

Monte Tucker
Auctioneer & Sales Associate
Sunny Point, America
(580) 515-4477

ANY ANNOUNCEMENTS MADE DAY OF SALE SUPERSEDE ALL PREVIOUS WRITTEN OR ORAL STATEMENTS.