

# ONLINE ONLY AUCTION!

Beginning MONDAY, MARCH 11, 2024 – SATURDAY, MARCH 30, 2024

Closing starting at 3:00 pm CST – SOFT CLOSE FORMAT

PREVIEW DAYS WILL BE: SUNDAY, MARCH 17, 2024 – 2:00 PM – 5:00 PM

SUNDAY, MARCH 24, 2024 – 2:00 PM – 5:00 PM

**Owner: Doris Gunning**

**MORE INFORMATION, PICTURES, AND TO BID, GO TO: [GRANTSAUCTION.HIBID.COM](http://GRANTSAUCTION.HIBID.COM)**

**PICKUP LOCATION: 1108 EAST MAIN STREET, CORDELL, OK**

**PICKUP TIMES – SUNDAY, MARCH 31, 2024 – 2:00-6:00 CST,**

**MONDAY, APRIL 1, 2024 – 10:00-6:00 CST & TUESDAY, APRIL 2, 2024 – 10:00-6:00 CST**

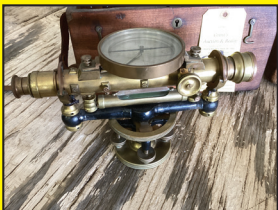
**15% Buyer's Premium – 10.5% Sales Tax – 4% Credit Card Fee**



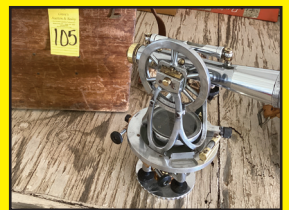
1936 FORD FIRETRUCK • 2000 CHEV. TAHOE  
1969-1972 PICKUP PARTS-QUARTER PANELS  
2004 ATV • TAILGATES • COWLS • WINDSHIELD  
1972 PICKUP(In process of restoration)  
1972 DONOR PICKUP



1934 FORD VEHICLE PARTS-BUMPERS,  
WINDSHIELDS • GRILL • PIPE  
COLLECTION OF VINTAGE SURVEYING TRANSITS  
LEVELS • COMPASSES & TRIPODS  
SHOP EQUIPMENT-WELDERS • FLOOR JACKS  
ENGINE STAND • PARTS WASHER  
AUTO BODY TOOLS • 350 CRATE MOTOR,  
SANDBLASTER POTS • COLLISION POST  
CHERRY PICKER • OFFICE FURNITURE & SUPPLIES  
WOOD CRAFT SUPPLIES AND MUCH MORE



SOMETHING FOR EVERYONE.  
HAROLD & DORIS GUNNING WERE IN THE  
SURVEYING BUSINESS FOR OVER 45 YEARS  
SELLING THEIR INVENTORY OF SURVEYING  
EQUIPMENT, COLLECTION OF VINTAGE SURVEYING  
EQUIPMENT AND INVENTORY OF VEHICLE PARTS  
COLLECTED TO RESTORE VEHICLES.



## Grant's Auction & Realty



580-225-0269 • "The Complete Liquidation Professionals"

Mike Grant  
Auctioneer/Sales Associate  
Texas License #13353  
Mobile: 821-1186

Cindy Grant  
Cashier/Real Estate Broker  
Elk City, OK  
Mobile: 821-1738

FIND US ON THE WEB AT  
[www.grantsauction.com](http://www.grantsauction.com)

Johnny Grant 1926-2010

Jeremy Justus  
Auctioneer

Monte Tucker  
Auctioneer & Sales Associate  
Sunny Point, America  
(580) 515-4477

ANY ANNOUNCEMENTS MADE DAY OF SALE SUPERSEDE ALL PREVIOUS WRITTEN OR ORAL STATEMENTS.