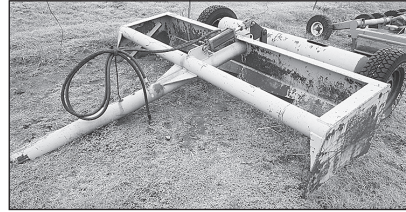


- SADDLES-HEAD STALLS**  
 1-Courts 15" Roping Saddle  
 1-Sharon Camarillo Barrel Racer Saddle  
 1-Lot Head Stalls  
 4-Saddle Racks  
 1-Large Lot Tack-Blankets, Pads

- FURNITURE-APPLIANCES HOUSEHOLD**  
 1-Maytag Washer & Electric Dryer  
 1-Whirlpool Dryer  
 1-Dining Table w/4 Chairs, 1 leaf  
 1-Sofa, Cloth  
 2-Cloth Rocker/Recliners

- 3-Arm & Side Chairs  
 2-End & Side Tables  
 2-4 Drawer Chest  
 1-2 Drawer File Cabinet  
 2-Office Chairs  
 2-Beds-King & Full Size  
 1-Wooden Desk  
 2-Table Lamps  
 1-Hoover Carpet Cleaner  
 2-Cots  
 1-Charcoal Grill  
 Large Lot Wall Hangings, Framed Pictures  
 1-School Bell  
 1-Hand Water Pump



***This is just a small listing of many other items!***

**PERSONAL PROPERTY TERMS:**  
 Cash, Visa, MasterCard or Personal Check.  
 All Accounts must be settled on sale day.  
 Permits must be shown or sales tax will be charged.

**SCAN QR CODE FOR MORE INFORMATION**



***Grant's Auction & Realty***

*"The Complete Liquidation Professionals"*  
 19139 Highway 6  
 SAYRE, OKLAHOMA 73662

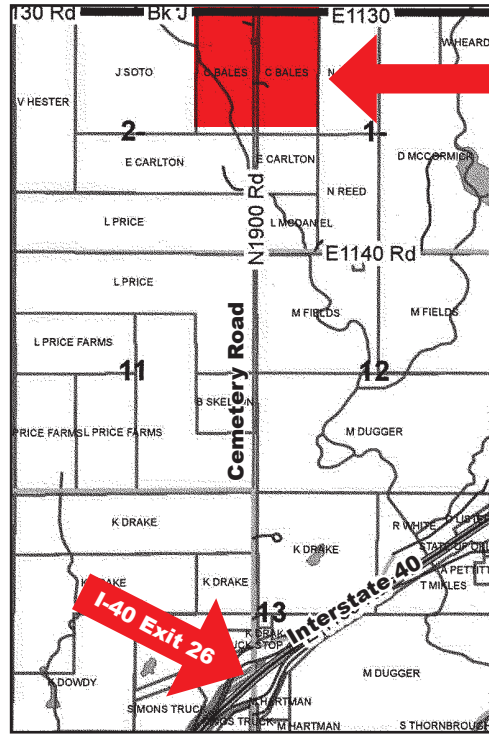


***Public Auction***

**160 Acres • Brick Home • 2001 Solitaire Mobile Home • Northeast of Sayre, OK  
 Selling in Three Tracts!! • Tractor • Trailers • Vehicles • Farm Equipment  
 JD Gator • Zero Turn Mower • Electric Scooter • Shop • Garden • Equipment  
 Saddles • Head Stalls • Furniture • Appliances • Household**

**Saturday, October 20, 2018 • 10:00 a.m.**

**RAIN DATE: NOVEMBER 3, 2018**



**PROPERTY & SALE LOCATION:**  
 11330 N. 1900 Rd, Sayre, OK – From the Cemetery Road, Exit 26 off of I-40, East of Sayre, OK, go 2 ½ miles North on BC 1900 Rd to the property location.



**Owners: Sue Bales & Tina Bales**

***Grant's Auction & Realty***  
 580-225-0269 • "The Complete Liquidation Professionals"

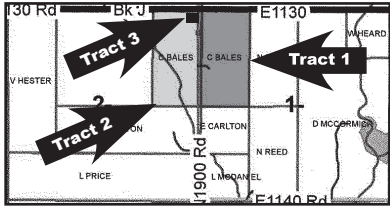
Mike Grant Auctioneer/Sales Associate Texas License #13353 Mobile: 821-1186  
 Cindy Grant Cashier/Real Estate Broker Elk City, OK Mobile: 821-1738  
 Johnny Grant 1926-2010  
 Monte Tucker Auctioneer & Sales Associate Sunny Point, America (580) 515-4477  
 Jeremy Justus Auctioneer

**FIND US ON THE WEB AT [www.grantsauction.com](http://www.grantsauction.com)**

**ANY ANNOUNCEMENTS MADE DAY OF SALE SUPERSEDE ALL PREVIOUS WRITTEN OR ORAL STATEMENTS.**



**160 Acres • Brick Home • 2001 Solitaire Mobile Home • Selling in Three Tracts!!**



**Open House: Sunday, October 7 – 2:00-4:00  
& Sunday, October 14 – 2:00-4:00**

**Tract #1 – Legal Description:** A 80 acre tract in the West-One half of the Northwest Quarter in Section 1, Township 10 North, Range 23 West, I.M., Beckham County, Oklahoma.

**Tract #1 - Property Description:** This 80 acre tract has native and Bluestem grass, a small pond, water well with solar pump, and a 1 ½ Story brick home with approximately 2,164 sq. ft. living area (1705 base and 459 upstairs), 2 or 3 bedrooms, 2 1/2 bathrooms, living room with woodburning fireplace w/blower, kitchen w/plenty of cabinet and counter space, eating bar, dining area, dishwasher and a gas range top and built-in oven. There is also an office, den with woodburning fireplace, utility w/access to the basement and a 23' x 25' attached garage. This home is supplied with



water from a water well and has a septic system. On this tract there is also a 40' x 60' Quonset barn, a 40' x 60' horse barn with 6-12'x12' horse stalls, wash room, feed room, tack room and a stall for hay storage.



**Tract #2 – Legal Description:** The East One-half of the Northeast Quarter of Section 2, Township 10 North, Range 23 West, I.M. Beckham County, Oklahoma less a 5 acre tract in the Northeast Corner and a .19 acre tract, Containing 75 acres (mol).

**Tract #2 - Property Description:** This tract has approximately 20 acres of good bottom land which has Bluestem grass and the balance being native pasture. The fences are 5 wire and water is supplied by water well with a solar pump and Timber Creek runs through it.



**Tract #3 – Legal Description:** A 5.24 acre tract of land lying in Lot One of Section 2, Township 10 North, Range 23 West, I.M. Beckham County, OK. Beginning at the Northeast Corner of said Lot One, West 380 feet, South 573.16 feet, East 3280 feet then north 573.16 feet to POB.

**Tract #3 - Property Description:** This is a beautiful well maintained 2001 Solitaire Mobile home with approximately 2016 sq. ft. living area sitting on a 5+ acre tract of land. This home has 3 bedrooms, 2 full bathrooms, kitchen with dishwasher, center island, pantry, eating bar and plenty of cabinet and counter space. There is a large living room with a log burning fireplace flanked with built-in bookshelves, a dining room just off the kitchen with a walk-in closet, a utility with back door entrance. The master bedroom has a large walk-in closet and the master bathroom has a garden tub, walk-in shower and double lavatories. The other two bedrooms are nice size and have walk-in closets. This home is total electric and has central heat and air, is supplied with a 80' water well and also has a 1000 gallon concrete septic tank with 300 feet lateral lines. The roof was replaced with 26 gauge metal in 2006 and the perimeter fencing is barbed wire. The metal shop is 40x50' and has a 20'x50' lean-to and the shop has concrete floors and 110 electricity.



**REAL ESTATE TERMS:** 10% of purchase price to be placed in escrow day of sale. Purchaser will have 10 days to examine title. Balance of purchase price to be due and payable upon acceptance of title. All 2017 and prior taxes will be paid by seller. 2018 taxes will be prorated. Possession will be at closing. All property sold "as is where is." Auction is not contingent upon buyer securing or obtaining financing. Grant's Auction & Realty is a transaction broker.



**TRACTOR-TRAILERS  
VEHICLES-FARM EQUIPMENT**

- 1-2011 Kubota M9540 Tractor w/ LA1353 Loader, Bucket, Triple Hydraulics, PTO, 280 hours
- 1-1995 Ford F250 Pickup, 5 spd., 4x4, 6.0 Power Stroke Diesel, Flatbed, My-D-Han-D Cake Feeder, Single Cab, 153,700 miles
- 1-2014 Ford XLT Expedition, Remote Start, Heated/Cooled Leather Seats, Rear-View Camera, Third Row Seating, Towing Pkg., Headrest DVD Players\, 1 Owner, 95,000 miles
- 1-John Deere MX7 Shredder
- 1-2007 CM Stock Trailer, 6'x16', Bumper Pull, Rubber Floor
- 1-20' Flatbed Trailer w/4' Dovetail & Ramps, GN
- 1-10' Econo-Mover Dirt Mover
- 1-John Deere 1518 Batwing Mower, 540 PTO
- 1-Wylie Sprayer, 300 Gallon, 5.5 hp, On Trailer
- 1-Big Valley Cattle Chute, Model 7271
- 6-Bunk Feeders
- 2-70 Gallon Poly Water Tanks
- 3-Metal Stock Tanks, Various Sizes



- 1-Schaben Sprayer, 12 volt pump, 60 gallon w/10' Booms
- 1-8' Shop-built pull behind Sprayer Boom
- 1-Diesel Fuel Tank w/12 volt pump
- 1-3 pt. Harrow, 11'
- 1-JD Cotton Trailer Running Gear
- 1-8' Disc
- 1-16-8's Wheat Drill
- 1-3 pt. Box Blade w/Rippers, 8'
- 1-3 pt. Springtooth, 8'
- 5-Bales Grass Hay
- 11-12' WW Cattle Panels
- 1-Log 10'-12' Cattle Panels
- 25-Joints Approx. 2 3/8" Tubing
- 1-JD Quick Hitch
- Large Lot Fence Supplies-Steel Post, Wire, Corner Post, Braces

**JD GATOR-ZERO-TURN MOWER  
ELECTRIC SCOOTER**

- 1-2006 John Deere Trail Gator, 4x4, HPX
- 1-Hustler Zero-Turn Mower, 21.5 hp, 48" cut
- 1-Pride Pursuit XL Electric Scooter
- 1-JD Lawn Sweeper, 42"
- 1-Set Mobility Ramps

**SHOP-GARDEN EQUIPMENT**

- 1-Homelite Generator, 11hp, 5500 Wt
- 1-Husqvarna Rear-Tine Tiller, 900DRT
- 1-Coleman Powermate Pressure Washer, 2700 psi, 2.5 gpm
- 1-Rockwell Blade Runner, RK320
- 1-Ace 16" Variable Speed Bench Scroll saw
- 1-Craftsman 6" Disc Grinder
- 1-13mm Drilling Machine
- 1-Rockwell Jawhorse



- 1-Chicago Drill Press, Table Top
- 1-DeWalt Cut-off Saw
- 1-Skilsaw, 7 1/4"
- 1-Craftsman 10" Compound Miter Saw
- 1-10" Tablesaw
- 1-Amrox Metal Cutting Bandsaw
- 1-Lincoln 225 amp Welder
- 2-Welding Helmets
- 1-Floor Jack – Jack Stands
- 1-Lot Chains, Chain Boomers
- 1-Shop Table, 3'x6 1/2'
- 1-Lot Hammers, Saws, Screwdrivers, Sockets, End Wrenches, Levels, Squares, Pry & Crow Bars, Axe, Pliers
- 1-Lot Shovels, Pitchforks, Limb Loppers, Posthole Diggers, Rakes, Brooms
- 3-Live Traps
- 2-Horse Feeders
- 1-Wooden Storage Cabinet
- 1-Craftsman Roll around Tool Box
- 1-4 Drawer Tool Box
- 1-O/A Cart
- 1-Feed Sack Dolly
- 1-Two-Wheel Dolly
- 1-Halogen Light on Stand
- 4-Gas Chainsaws – Stihl, McCulloch, Poulan
- 1-Stihl Gas Weedeater
- 1-Craftsman Blower
- 1-Senco 15 Gauge Angled Finish Nailer
- 1-DeWalt Reciprocating Saw
- 1-Propane Shop Heater, 35,000 BTU
- 1-Gallagher Solar Powered 517 Fence Charger
- 1-12 Volt Winch
- 1-27 Drawer Bolt Bin
- 1-8'x11' Dog Pen
- 1-Lot Iron Wheels

